

A large red circle is centered on the page. Inside the circle, the text "Wi-Fi NVR Kits" is written in a bold, white, sans-serif font. Below it, "Quick Start Guide" is written in a smaller, white, sans-serif font.

# Wi-Fi NVR Kits

## Quick Start Guide

Please read the Quick Start Guide carefully before using the product and keep it.  
Related tools and documents of products, please download from <http://www.herospeed.net>.

## About this manual

- Thank you for purchasing our products, if you have any questions or requires, please contact us.
- This manual is for Wi-Fi NVR Kits ( wireless NVR & wireless cameras). It will be updated subject to product's updating, new version will be not noticed specifically.
- If this manual's any products description not accord with the real products, please in kind prevail.

## Safety Precautions

1. Please modify default password promptly after the equipment is installed, to avoid being stolen.
2. Please do not place and install the equipment in direct sunlight or near heating equipment.
3. Please do not install the equipment in wet, dusty or soot-burning places.
4. Please keep the NVR level installed, or install it in a stable place, and take care to prevent the product from falling.
5. Do not drop or splash liquid onto the NVR and ensure that no liquid-filled items are placed on the device to prevent liquid from flowing into the device.
6. Please install the equipment in a well-ventilated place and do not block the vents of the equipment.
7. Please use the equipment within rated input/output range only.
8. Please do not disassemble the equipment without notifying supplier.
9. Please transport, use and reserve the equipment in permissible range of humidity and temperature.

## Disclaimer

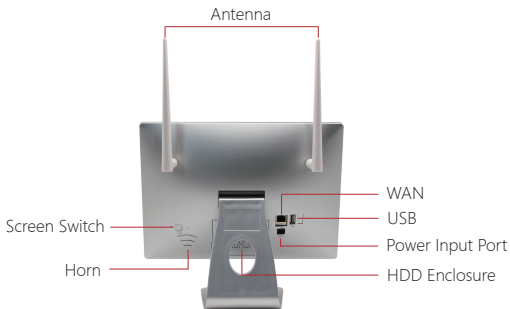
Please pay special attention to the following exclusions or restrictions:

1. If the product is terminated for any of the following reasons, our company shall not be liable for any personal injury or property damage to you or third parties: A. The installation or use of equipment is not strictly in accordance with the requirements; B. Maintenance of state or public interests; C. Majeure; D. Your own or third-party reasons, including but not limited to the use of third-party products, software, components and so on.
2. Our company does not guarantee the equipment for special purposes or use in any express or implied way. This equipment shall not be used for medical/safety equipment or other products which can cause life hazards and personal injury applications or dangerous uses of weapons of mass destruction, biological and chemical weapons, nuclear explosion and any unsafe use of nuclear energy or contrary to humanitarian purposes. Any loss or liability arising from such use shall be borne by yourself.
3. This equipment can perceive specific illegal invasion in correct installation and use, but it can not avoid accidents or personal injury and property loss caused by this. In daily life, please be vigilant and strengthen the awareness of safety precautions.
4. We are not liable for any consequential, accidental, special or punitive damages, requests, property losses, data losses and documents losses. In the maximum extent permitted by law, our liability for compensation shall not exceed the amount paid by you when purchasing this product.



# Products Appearance Description

Antenna, Screen Switch, Horn, WAN, USB Interface, Power Input Port, HDD Enclosure

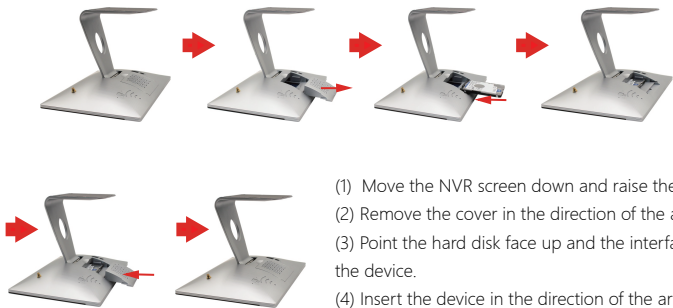


## Wi-Fi NVR Kits Quick Installation Guide

### 1. Install HDD.

Make sure all power are cut before intalling.

Notes: Please use the 2.5 inch professional hard disk recommended by supplier.



- (1) Move the NVR screen down and raise the base.
- (2) Remove the cover in the direction of the arrow.
- (3) Point the hard disk face up and the interface to the device.
- (4) Insert the device in the direction of the arrow along the card slot.
- (5) Cover the hard disk cover.
- (6) Installation is complete.

## 2. Make sure Wi-Fi NVR Kits working well.

After the NVR and all IPCs are powered on, all IPC videos appear on the NVR screen, the device works normally and can be installed in the next step.

Notes: Please use the matched power supply in the package to prevent the NVR from working properly or damaging the NVR when the power supply is not working properly.



## 3. Adjusting the Antenna:

The NVR antenna transmits signals to the surroundings. When the NVR and the IPC antenna are at the same height and parallel to each other, the effect is best. If the NVR can not be the same height, the IPC antenna should be tangent to the sphere with the center of the NVR (Figure 1, Figure2- 2). Don't let the antenna point directly NVR (Figure 2-1), according to the figure can be placed correctly.

Ideal Installation Mode

Correct demonstration



Figure 1

Not Suggested

Suggested



Figure 2-1



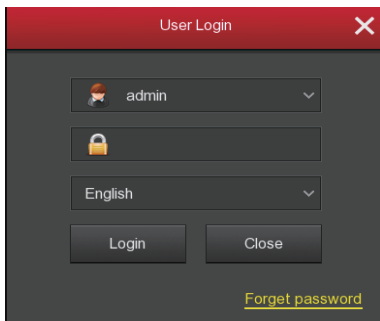
Figure 2-2

## System login

Start up the NVR, right click the desktop and enter the user login interface.

Input the user name and password.

System default user name : "admin" password : "12345".

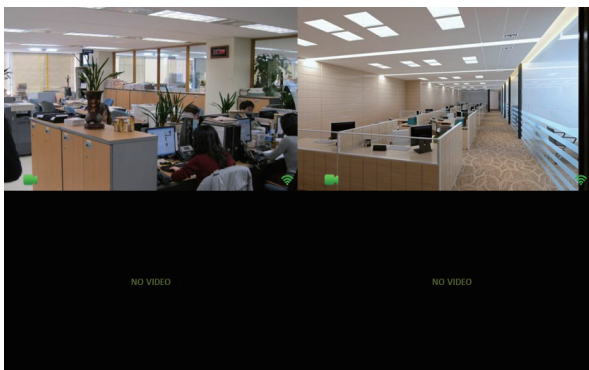


The image shows a 'User Login' dialog box with a red header and a close button (X) in the top right corner. The dialog contains the following elements:

- A dropdown menu with a user icon and the text 'admin'.
- A password input field with a lock icon.
- A dropdown menu with the text 'English'.
- Two buttons: 'Login' and 'Close'.
- A link labeled 'Forget password' at the bottom right.

## Live View

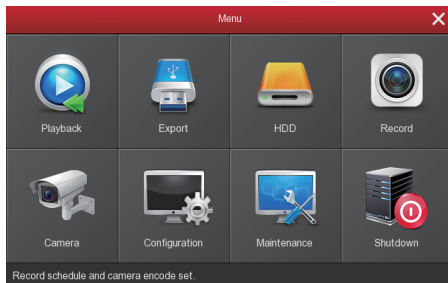
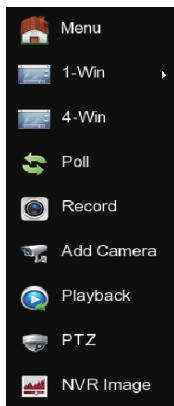
After the device is started, you can enter the preview screen. The system date, time, and channel name can be seen on the preview screen. After logging in to the system, double-click the left mouse button to preview the single screen; double-click the left mouse button again to return to the multi-screen preview.



## Menu operation instruction

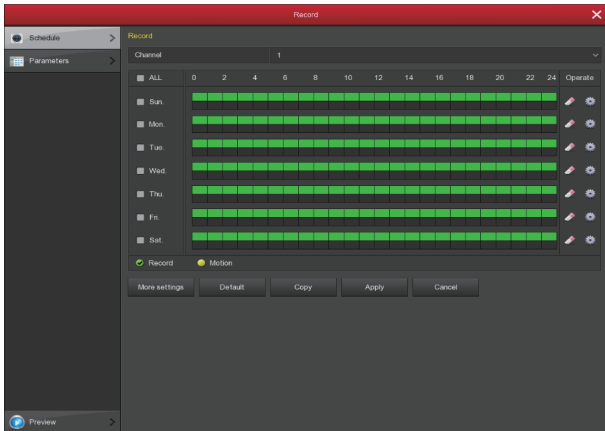
Right click to popup shortcut menu, the menu consists with the following three parts:

- 1) Preview mode: Select the preview mode in the menu bar you like, such as **【1-Win】** or **【4-Win】**.
- 2) Shortcut menu mode: It contains **【Poll】**, **【Record】**, **【Add Camera】**, **【Playback】**, **【PTZ】** and **【NVR Image】**, you can click and the enter corresponding menu directly. After the setting is completed and the application is saved, click the right mouse button on the setting interface to exit the interface or return to the previous menu.
- 3) Main menu: It contains **【Playback】**, **【Export】**, **【HDD】**, **【Record】**, **【Camera】**, **【Configuration】**, **【Maintenance】**, **【Shutdown】** eight parts.



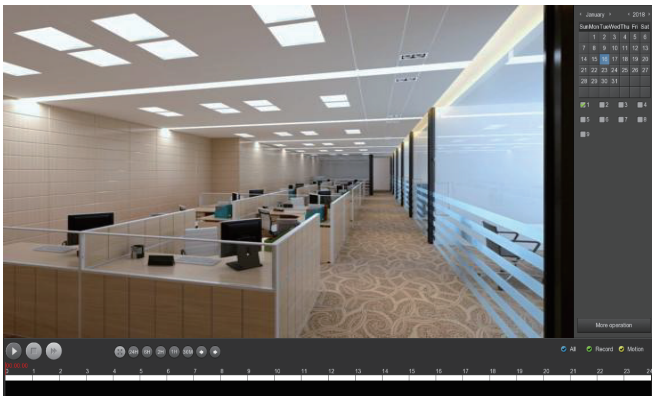
## Recording Setting

- 1) Enter "Record" interface to set recording from shortcut menu **【Record】** or main menu. Default setting is all channels are recorded 24 hours a day.
- 2) Check **【Motion Detection】** to open the motion detection video.
- 3) The motion sections have no more than 6 time periods each day, and the device can perform normal recording or motion detection recording during the planned time period. If normal record and motion record are overlapped, it can only save the motion records while motion detection comes up.



## Playback

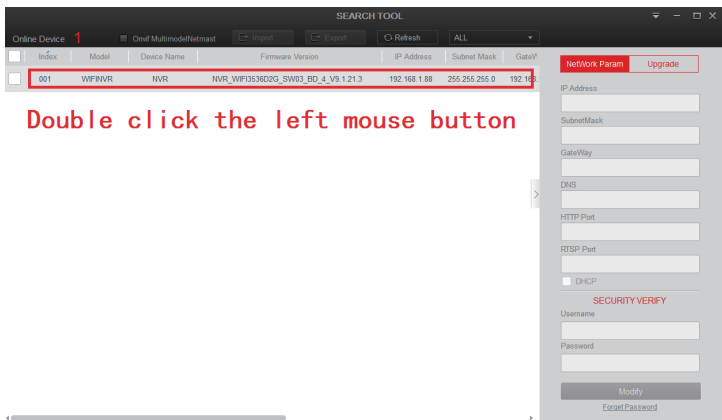
- 1) Enter "Playback" interface by clicking "Playback" from shortcut or main menu.
- 2) Select channels, record mode, date and search the record files, click the play button in the lower left corner of the interface to play the video file, or drag the time progress bar to play the video file at the specified time.



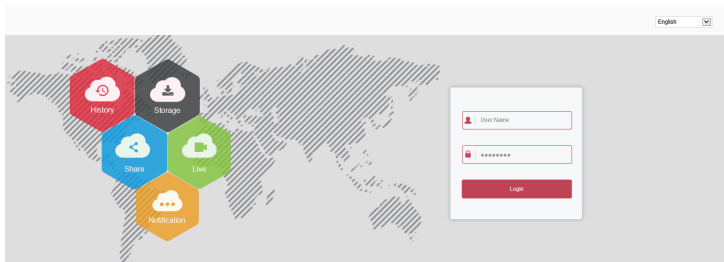
(Video playback interface)

## PC Side LAN Access

- 1) PC and NVR are connected in the same LAN (connected to the same router).
- 2) Open the search tool on the PC, select the target device from the search results and double-click with the left mouse button to enter the login interface (search tool can be downloaded and installed at <http://www.herospeed.net/>).



- 3) Enter the username and password and click Login (the default username is admin and the password is 12345).



# Mobile App Access

Download and install BitVision on smart phone by following way:

1. In the Android phone App Store or iPhone App Store enter "BitVision" search.
2. Scan the following QR codes.

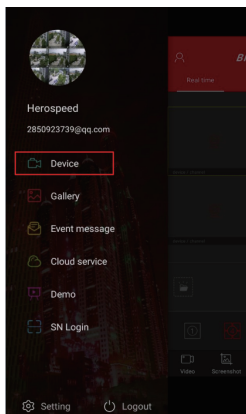


Android

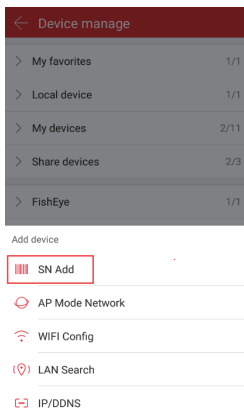


ios

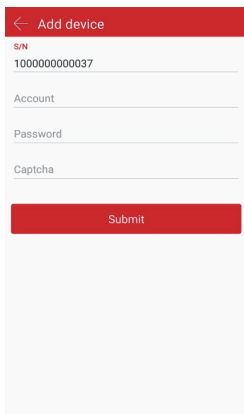
Run the BitVision App (new users need to register an account to log in first). The steps to add devices are as follows:



①

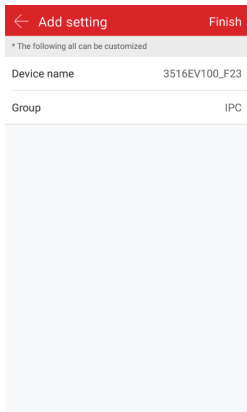


②



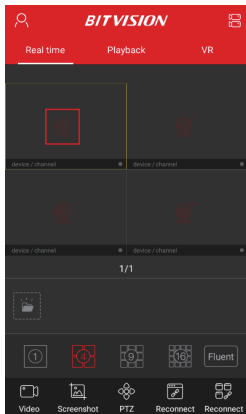
③



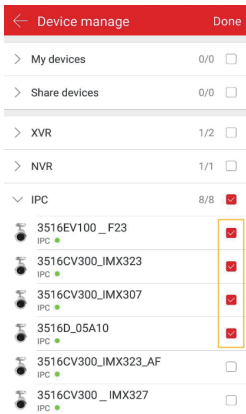


④

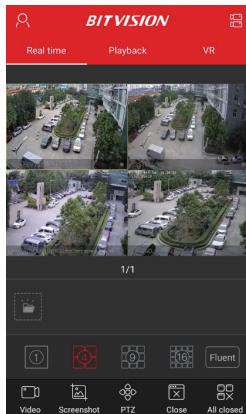
The steps to preview the video are as follows:



①



②






③

① Click **【Real time】** , click **【】** to enter the Device manage interface.

② Select the channel to preview, click **【Done】** .

③ Start to play the real-time video.

① Click on **【】** in the top left corner and click on **【Device】** in the sliding menu.

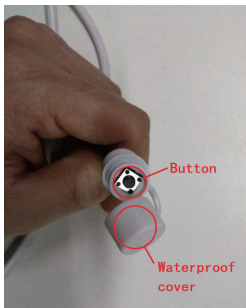
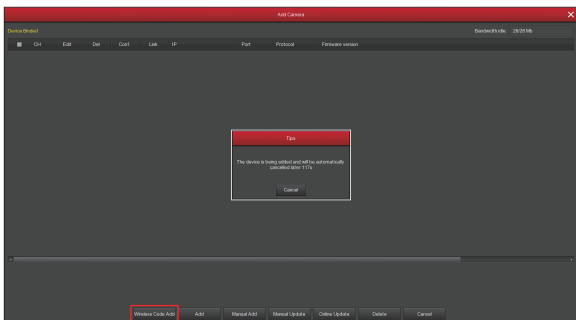
② Click **【】** → **【 Add device】** → **【SN Add】** , Align the QR code on the product label on the bottom of the NVR to scan;

③ Enter device user name, password and Captcha (printed on the label), click **【Submit】** ;

④ Click **【Device name】** → enter the device name, click **【Done】** ; Click **【Group】** → choose camera group, click **【Done】** , click **【Finish】** .

## Wireless pairing

The Wi-Fi NVR Kits has been paired with the code at the factory, and can be mapped when powered. If there is a special situation, you need to re-pair the code. You can right click on the NVR and click 【Add Camera】 in the shortcut menu to enter the Add Camera interface. Click 【Wireless Code Add】 , within 120 seconds of the NVR pair code countdown, long press the button on the camera tail line (about 6 seconds) until the camera infrared light flashes. At this time, the code pairing will be performed and automatically output images.



**Note:** The button on the camera tail has a cover, and the cover is waterproof. Cover the cover when not using the button.

## Reset

The camera supports forced recovery of the factory settings by quickly pressing the button on the tail line 3 times, including network setting parameters and wireless pairing parameters, etc., please be careful.